



PRO-TEC EQUIPMENT MOD SERIES SHEETING GUIDE

Designed to provide crews with a safe working environment while dealing with crossing and existing utilities, the MOD Sheeting Guide enables up to 4' of clearance from the bottom of the panel to the bottom of the excavation. Meaning a two foot tall post and MOD Sheeting Guide panel can provide six feet of protection!

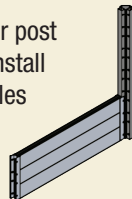
Standard features:

- Smooth wall panel design
- Foam filling – prevents soil and water buildup
- Accepts telescoping spreaders (MTS Spreaders)
- Standard MOD System panels can be used in conjunction with sheeting guide panels and posts
- 2-way corner posts allow, 2-, 3- or 4-sided configurations
- Professional Engineer Certified to meet or exceed O.S.H.A. requirements

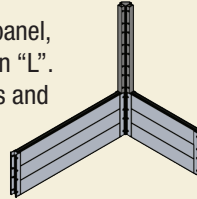


Quick and Easy Assembly

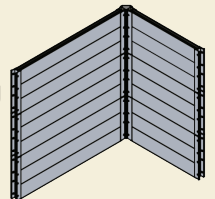
1. Attached corner post to one panel. Install pins with handles on the outside.



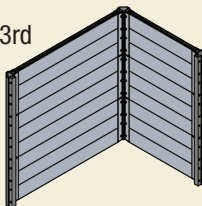
2. Set back panel, creating an "L". Install pins and keepers.



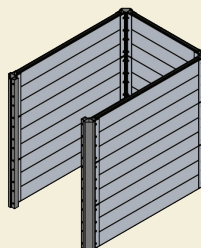
3. Stack and slide panels to desired height before adding 2nd corner post.



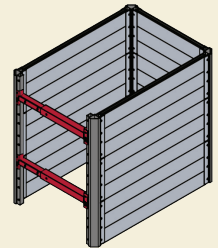
4. Attached 2nd and 3rd corner posts.



5. Stack and slide panels to desired height. Add 4th corner post.



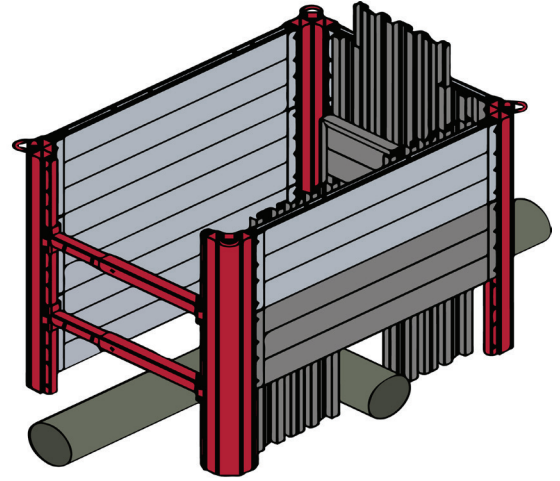
6. Install lift eyes and spreaders in required locations, refer to tabulated data.



Sheeting Guide Corner Post



Model	Length	Weight (lb.)
MC-48-SG-ST	48"	70
MC-72-SG-ST	72"	196
MC-96-SG-ST	96"	255
MC-120-SG-ST	120"	318



Sheeting Guide Panels used with standard panels and MTS Spreaders

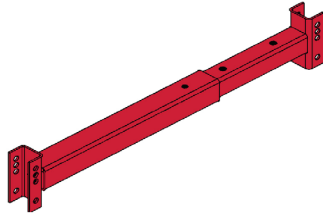
MOD Sheeting Guide Panel Chart

Model	Height x Length	# of sheets required	Weight (lb.)
MPS-24-SG	2' x 4'	6	127
MPS-26-SG	2' x 6'	9	190
MPS-28-SG	2' x 8'	12	250
MPS-210-SG	2' x 10'	15	450
MPS-212-SG	2' x 12'	18	535
MPS-214-SG	2' x 14'	21	720

Special length panels are available

Telescoping Adjustable Spreader

Model	Adjustment (I.D.)	Weight (lb.)
MTS - 1826	18" to 26"	27
MTS - 2334	23" to 34"	32
MTS - 2844	28" to 44"	38
MTS - 3454	34" to 54"	41
MTS - 4266	42" to 66"	56
MTS - 5288	52" to 88"	68



Sheeting Pile

Model	Length	Weight (lb.)
ASG-8S	8'	29
ASG-10S	10'	37
ASG-13S	13'	48



PRO-TEC EQUIPMENT

4837 West Grand River Ave
Lansing, MI 48906
Phone: 1-800-292-1225
Fax: (517) 827-3263
www.pro-tecequipment.com

The information in this brochure is presented in good faith to assist the user in determining whether our products are suitable for his/her application. No warranty or representation, however, is intended or made, nor is protection from any law or patent to be inferred, and all patent rights are reserved. Job site photos are strictly intended for general product information only and may not comply with all applicable safety standards. Always refer to manufacturer's specific tabulated data, O.S.H.A. 29 CFR 1926 Subpart P for excavation and all applicable safety standards prior to each use. ©2019 Pro-Tec Equipment. All rights reserved.

ARCOSA
SHORING PRODUCTS